

Installing Roll Film Spindles (open spool or hub)

MCC150, MCC250 and MC1635M Carriers

Your MCC150 Combination Carrier is provided with two spindles:

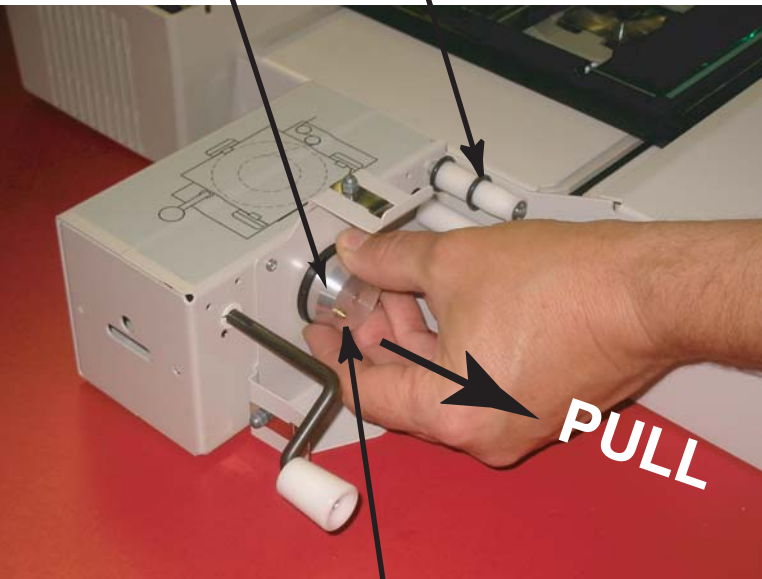
1. A SPINDLE HUB for cartridge film (3M).
2. OPEN SPOOL SPINDLE for 16mm and 35mm roll film.

The MCC150 Combination Carrier is shipped from the factory, with the SPINDLE HUB for Cartridge film installed and with the Roll Film Guides located for 16mm/Cartridge Film (NOTE that the two roll film guides, one on the supply side and one on the take-up side of the MCC150 Combination Carrier).

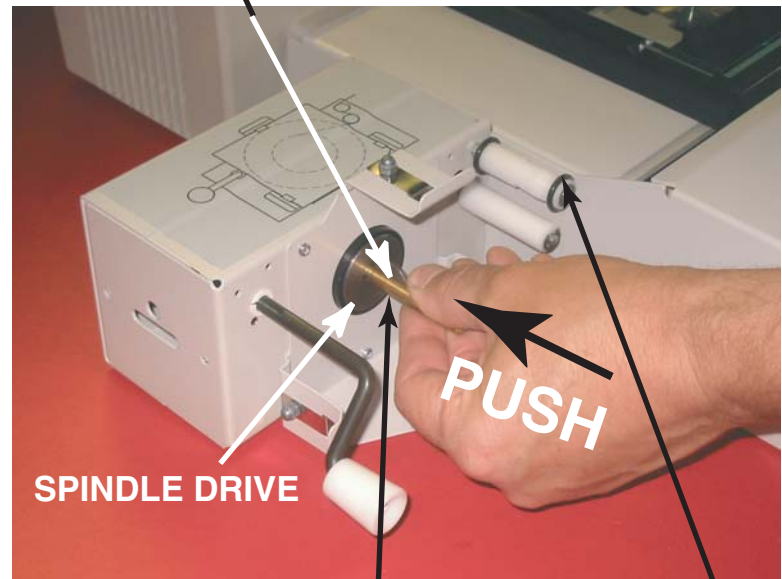


The 16mm/35mm OPEN SPOOL SPINDLE is shipped inside the plastic bag with the QUICKTHERAD Take-up Spool

Roll Film Guide



PULL



SPINDLE DRIVE

PUSH

Installing the 16mm/35mm OPEN SPOOL SPINDLE:

1. Remove the SPINDLE HUB, grasp firmly and pull forward. Store the SPINDLE HUB in a safe location.
2. Install the OPEN SPOOL SPINDLE: grasp firmly and insert into the SPINDEL DRIVE slot. Push firmly into place.
3. If you will be using 35mm film, move the Roll Film Guides (black "O-Rings") by sliding them on the white roller to the location as shown above (both sides).

Reverse these steps to return to a Cartridge Film application